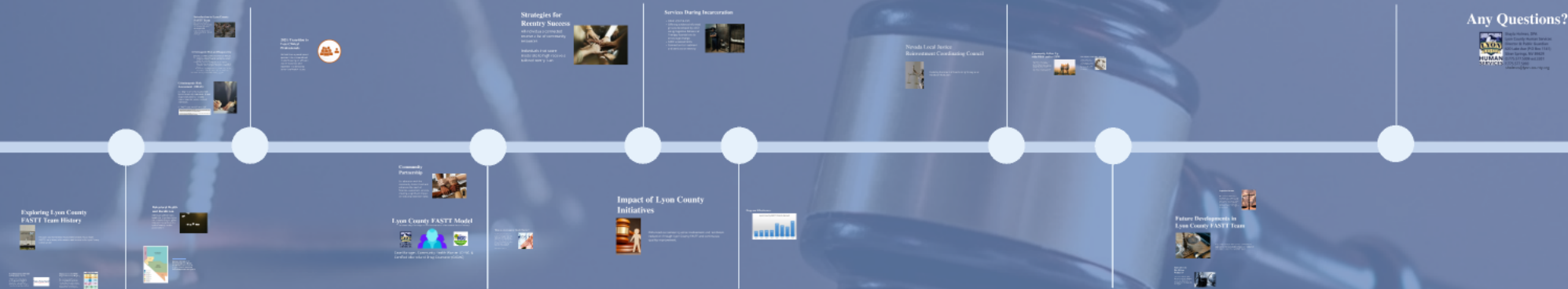


# Reducing Justice Involvement through FASTT

*Exploring Forensic Assessment Services Triage Team and  
Recidivism Reduction Strategies*



# Exploring Lyon County FASTT Team History



The Lyon County Forensic Assessment Services Triage Team (FASTT) has a history of innovation and service in the Lyon County justice system.

# Establishment by SAMSHA GAINS Center (2014)

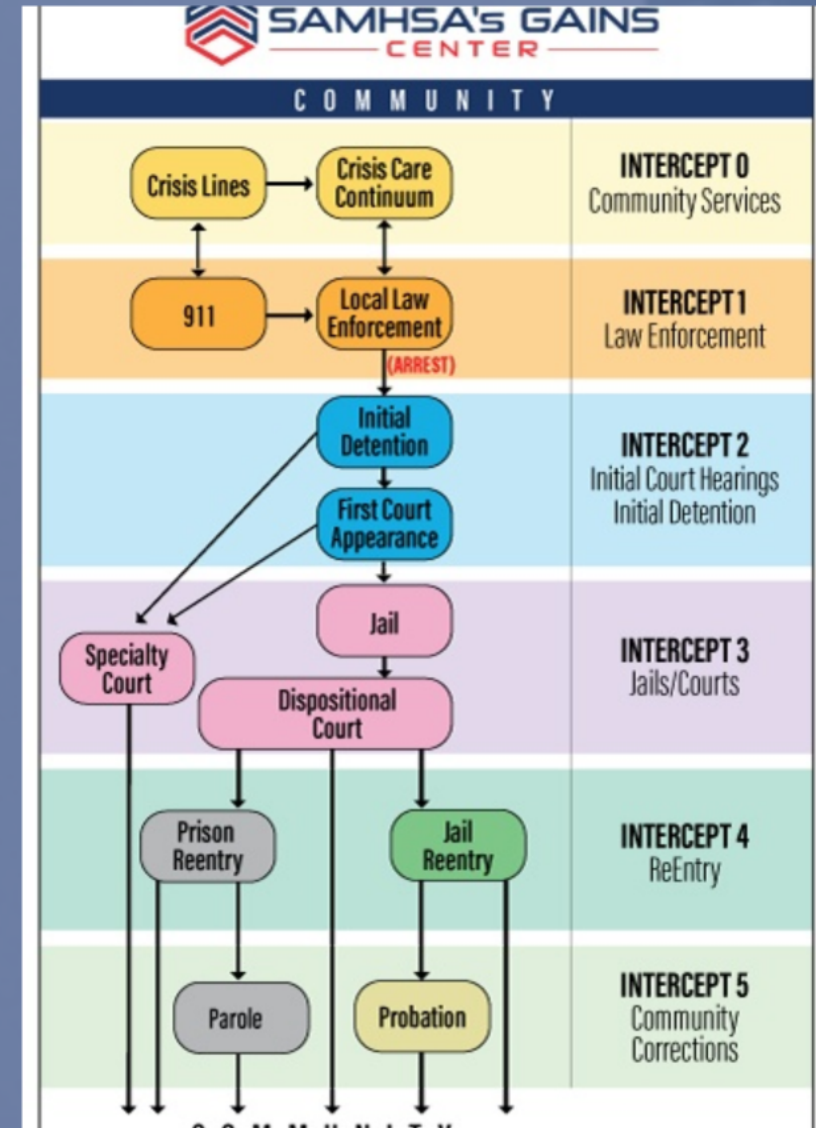
SAMSHA GAINS Center played a pivotal role in founding the Lyon County FASTT Team in 2014, a workshop was facilitated using the Sequential Intercept Mapping Model.

The logo for SAMHSA's GAINS CENTER. It features the text "SAMHSA's GAINS" in a bold, dark blue sans-serif font. Below this, the word "CENTER" is written in a smaller, red sans-serif font. The entire text is flanked by two horizontal red lines, one on each side.

**SAMHSA's GAINS**  
— CENTER —

# Integration with SAMSHA Sequential Intercept Mapping

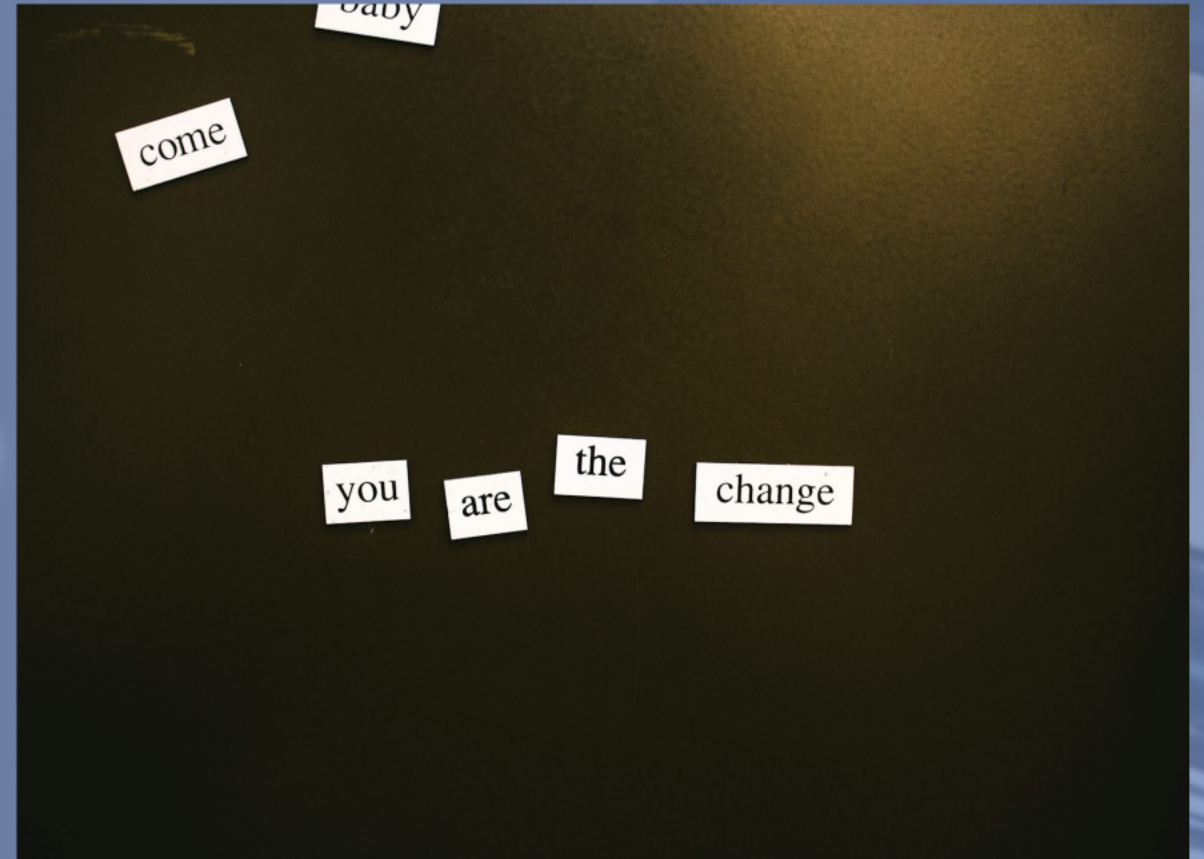
The Lyon County FASTT Team was born out of SAMSHA's Sequential Intercept Mapping model intercepts 3 & 4, enhancing the effectiveness of addressing complex behavioral health issues in the justice system.

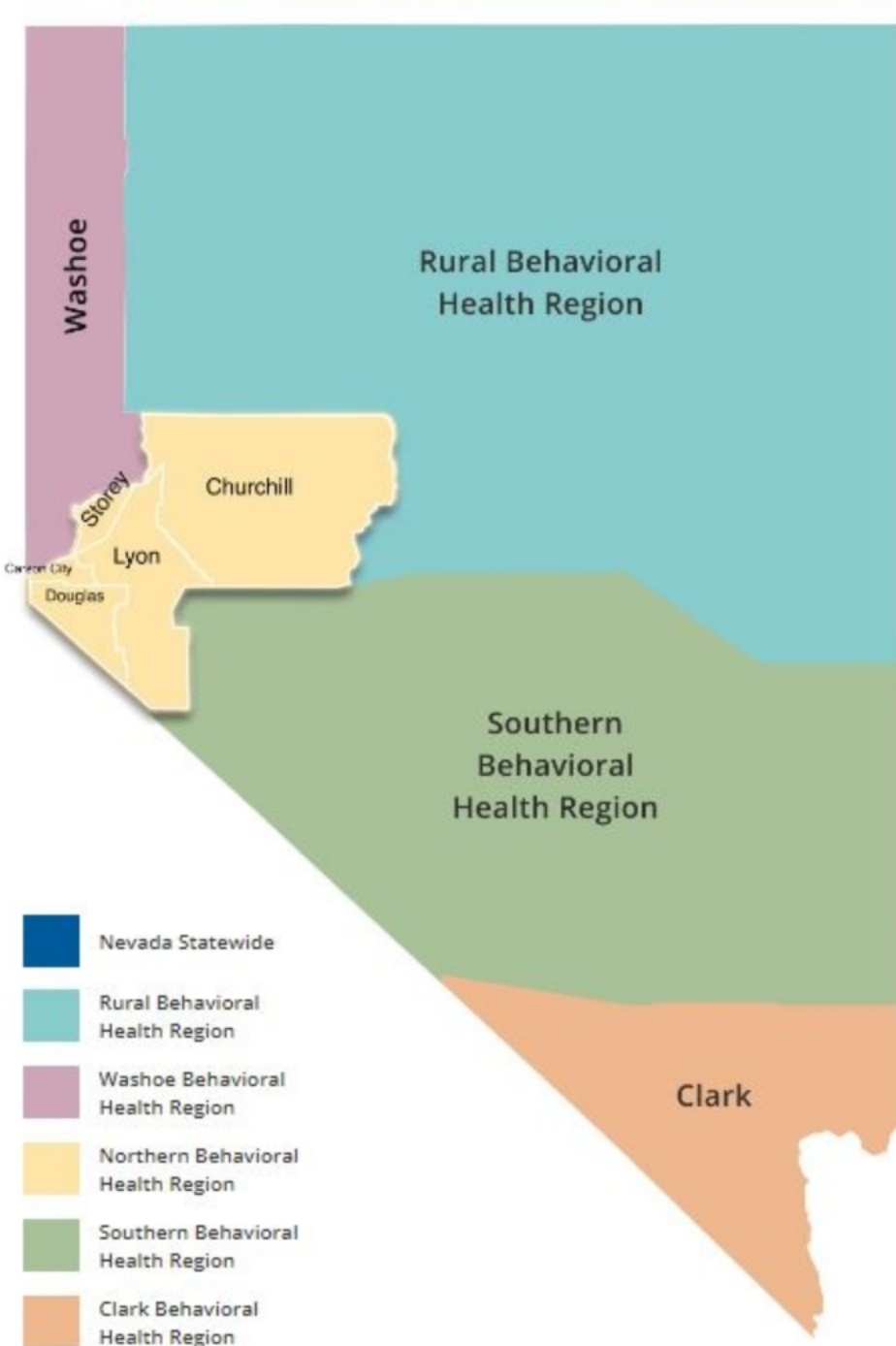




# Behavioral Health and Recidivism

Individuals with behavioral health challenges face higher risk of reoffending. Targeted interventions can break the cycle of reentry into the justice system.





Regional effort led by the Northern Behavioral Health Coordinator helped create the program and has maintained focus on improvement and growth.

# Introduction to Lyon County FASTT Team

The Lyon County FASTT Team is an initiative focused on providing specialized criminogenic risk assessment services and reentry plans within the local county jail.





# Criminogenic Risk and Responsivity

- Dynamic risk factors (also called criminogenic needs) are factors that, when changed, have been shown to result in a reduction in recidivism.
  - Identifying these needs allow the team to target programmatic needs for each individual.
- The responsivity focuses on identifying barriers to treatment
  - Responsivity issues are likely to keep individuals from engaging in treatment, such as intelligence, reading ability, and language barriers.
  - Unaddressed, it is likely that these factors will impede treatment and, as a result, indirectly prevent a reduction in recidivism.

[https://www.uscourts.gov/sites/default/files/74\\_1\\_2\\_0.pdf](https://www.uscourts.gov/sites/default/files/74_1_2_0.pdf)



# Criminogenic Risk Assessment (ORAS)

Utilizing the Ohio Risk Assessment System to identify individual risk and responsivity factors and tailor interventions for justice-involved individuals.

LC FASTT uses the CST and CSST

**Community Supervision Screening Tool (ORAS-CSST):** Designed for use in a community setting. The tool consists of 4 items and can be administered in 5 to 10 minutes. *It is recommended that a full CST be conducted on offenders who score moderate to high risk on this screening instrument.*

**Community Screening Tool (ORAS-CST):** Designed for use in a community setting. The tool consists of 35 items and can be administered in approximately 45 to 60 minutes.



# LC FASTT uses the CST and CSST

**Community Supervision Screening Tool (ORAS-CSST):** Designed for use in a community setting. The tool consists of 4 items and can be administered in 5 to 10 minutes. *It is recommended that a full CST be conducted on offenders who score moderate to high risk on this screening instrument.*

**Community Screening Tool (ORAS-CST):** Designed for use in a community setting. The tool consists of 35 items and can be administered in approximately 45 to 60 minutes.

# 2021: Transition to Less Clinical Professionals

Shifted from a panel-based approach to a streamlined model focusing on efficient use of resources and expertise in addressing behavioral health issues.





# Community Partnership

Collaboration with the community fosters trust and enhances the reach of forensic assessment services, creating a significant impact on reducing recidivism rates.





# Lyon County FASTT Model

Implementing Criminogenic Risk Assessment and Innovative Service Delivery



Case Manager, Community Health Worker (CHW), &  
Certified Alcohol and Drug Counselor (CADAC)

# What is a Community Health Worker?

"A certified community health worker (CHW) is a frontline public health worker who is a trusted member of and/or has a close understanding of the community served. This trusting relationship enables the CHW to serve as a liaison between health/social services and the community to facilitate access to services and improve the quality and cultural competence of service delivery."

[www.nevadacertboard.org](http://www.nevadacertboard.org)





# Services During Incarceration

- ORAS (CSST & CST)
- Offering evidence informed groups developed by UCCI using Cognitive Behavioral Therapy foundations to encourage change.
- CADAC assessments.
- Connection to treatment and services on reentry.



# Strategies for Reentry Success

All individuals connected receive a list of community resources

Individuals that score moderate to high receive a tailored reentry plan





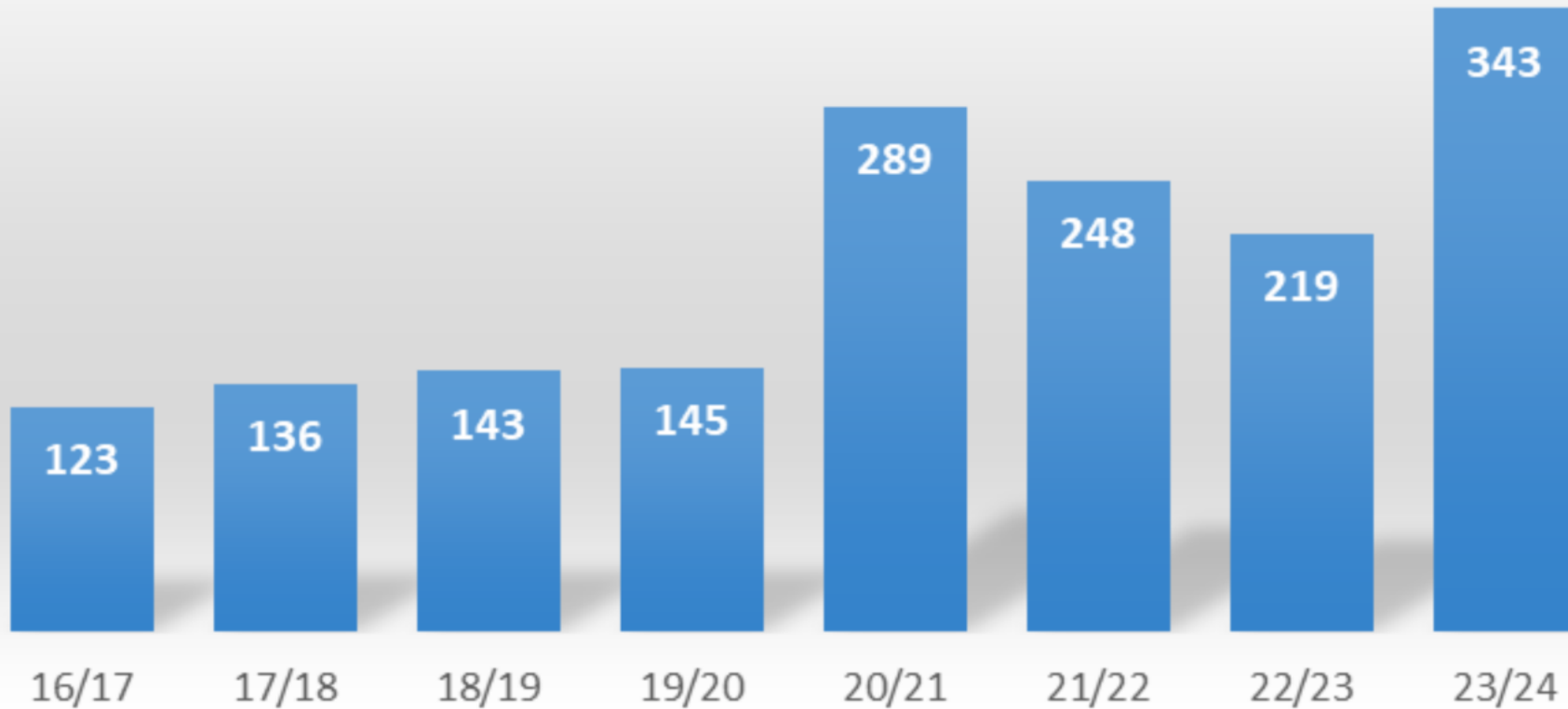
# Impact of Lyon County Initiatives



Enhanced outcomes in justice involvement and recidivism reduction through Lyon County FASTT and continuous quality improvement.

# Program Effectiveness

Lyon County FASTT Clients Served



# Nevada Local Justice Reinvestment Coordinating Council



Exploring the Impact of New Funding Strategies on  
Recidivism Reduction



# Community Follow-Up with PRSS and/or CHW

Peer Recovery Support Specialists (PRSS) and Community Health Workers (CHWs) are key components in ensuring a seamless connection to essential services post-justice involvement, fostering a supportive environment for successful reentry.





# What is a Peer Recovery Support Specialist?

" A certified peer recovery and support specialists (PRSS) is an individual with lived experience in recovery from substance use, problem gambling, mental health and/or other co-occurring challenges. Peers use their recovery experience to provide support and hope to individuals working through their own recovery.

As of August 1st, 2023 all individuals who are receiving compensation will need to be certified in Nevada due to legislation passed in 2021".

[www.nevadacertboard.org](http://www.nevadacertboard.org)



# Expansion Dreams

The Lyon County FASTT Team is strategizing how to expand to meet the increasing demand for mental health supports while incarcerated. We prioritized community based reentry supports as this has been identified as a critical missing piece for some time.



# Any Questions?



Shayla Holmes, DPA

Lyon County Human Services

Director & Public Guardian

620 Lake Ave (P.O Box 1141)

Silver Springs, NV 89429

O:775.577.5009 ext.3301

F:775.577.5093

[sholmes@lyon-county.org](mailto:sholmes@lyon-county.org)